

**Date: 11 February 2025**



**Hinckley & Bosworth  
Borough Council**

*A Borough to be proud of*

**To: Members of the Joint Community Safety  
Partnership Overview & Scrutiny Committee**

Blaby District Council representatives:

Cllr N Brown (Vice-chair)

Cllr R Bayliss

Cllr A Clifford

Cllr L Cousin

Cllr R Denney

Cllr S Findlay

Cllr J Forey

Cllr A Moseley

Cllr T Shepherd

Cllr M Tomeo

Cllr N Wright

Hinckley & Bosworth Borough Council representatives:

Cllr C Lambert (Chair)

Cllr DS Cope

Cllr MJ Crooks

Cllr C Gibbens

Cllr C Harris

Cllr J Moore

Cllr A Pendlebury

Cllr M Simmons

Cllr MJ Surtees

Cllr A Weightman

Cllr P Williams

Dear member,

There will be a meeting of the **JOINT COMMUNITY SAFETY PARTNERSHIP OVERVIEW & SCRUTINY COMMITTEE** in the De Montfort Suite, Hinckley Hub on **WEDNESDAY, 19 FEBRUARY 2025 at 6.30 pm** and your attendance is required.

Yours sincerely

Rebecca Owen  
Democratic Services Manager  
(Hinckley & Bosworth Borough Council)

## Fire Evacuation Procedures

- On hearing the fire alarm, leave the building **at once** quickly and calmly by the nearest escape route (indicated by green signs).
- *There are two escape routes from the Council Chamber – at the side and rear. Leave via the door closest to you.*
- Proceed to **Willowbank Road car park**, accessed from Rugby Road then Willowbank Road.
- **Do not** use the lifts.
- **Do not** stop to collect belongings.

## Recording of meetings

At HBBC we are open and transparent about how we make decisions. We allow recording, filming and photography at all public meetings including Council, the Executive and Planning Committee as long as doing so does not disturb or disrupt the proceedings. There may occasionally be some reports that are discussed in private session where legislation requires this to happen, but this is infrequent.

We also allow the use of social media during meetings, which helps to bring the issues discussed to a wider audience.

Members of the public, members of the press and councillors are hereby informed that, in attending the meeting, you may be captured on film. If you have a particular problem with this, please contact us so we can discuss how we may accommodate you at the meeting.

## Use of mobile phones

To minimise disturbance to others attending the meeting, please switch off your phone or other mobile device or turn it onto silent or vibrate mode.

Thank you

## A G E N D A

1. APOLOGIES AND SUBSTITUTIONS

2. MINUTES OF PREVIOUS MEETING (Pages 1 - 4)

To confirm the minutes of the previous meeting.

3. ADDITIONAL URGENT BUSINESS BY REASON OF SPECIAL CIRCUMSTANCES

To be advised of any additional items of business which the Chair decides by reason of special circumstances shall be taken as matters of urgency at this meeting.

4. DECLARATIONS OF INTEREST

To receive verbally from members any disclosures which they are required to make in accordance with the Council's code of conduct or in pursuance of Section 106 of the Local Government Finance Act 1992. **This is in addition to the need for such disclosure to be also given when the relevant matter is reached on the agenda.**

5. BLABY AND HINCKLEY & BOSWORTH COMMUNITY SAFETY PARTNERSHIP ANNUAL UPDATE (Pages 5 - 34)

To provide an annual update on the work of the Blaby and Hinckley & Bosworth Community Safety Partnership.

This page is intentionally left blank

## **JOINT COMMUNITY SAFETY PARTNERSHIP OVERVIEW & SCRUTINY COMMITTEE**

Minutes of a meeting held at the Council Offices, Narborough

**WEDNESDAY, 13 DECEMBER 2023**

### **Present:-**

#### **Blaby District Council representatives:**

Cllr. Nick Brown (Chairman)	Cllr. Antony Moseley
Cllr. Nick Chapman	Cllr. Tracey Shepherd
Cllr. Luke Cousin	Cllr. Neil Wright
Cllr. Janet Forey	

#### **Hinckley & Bosworth Borough Council representatives:**

Cllr. Chris Lambert (Chairman)	Cllr. Claire Harris
Cllr. Surtees (Vice-Chairman)	Cllr. Ann Pendlebury
Cllr Paul Williams (Vice-Chairman)	Cllr. Anna Weightman

### **Also in attendance:-**

Cllr. Les Phillimore and Cllr. Michael Mullaney – Joint Chairs of the Community Safety Partnership.

Insp. Mat Allingham and Insp. Neil Whittle – Leicestershire Police

### **Officers present:-**

Caroline Harbour	- Environmental Health, Housing, Net Zero & Community Services Group Manager
Sharon Stacey	- Director Community Services (HBBC)
Rebecca Holcroft	- Community Services Manager
Rachel Burgess	- Community Services and Safeguarding Manager (HBBC)
Rebecca Owen	- Democratic Services Manager
Sandeep Tiensa	- Senior Democratic Services & Scrutiny Officer
Nicole Cramp	- Democratic & Scrutiny Services Officer
Isaac Thomas	- Democracy Support Officer

### **Apologies:-**

Cllr. Roy Denney, Cllr. Susan Findlay, Cllr. Matt Tomeo, Cllr. Maureen Cook, Cllr. David Cope, Cllr. Joyce Crooks, Cllr. Cathie Gibbens and Cllr. James Moore

**180. DISCLOSURES OF INTEREST**

No disclosures were received.

**181. BLABY AND HINCKLEY & BOSWORTH JOINT SCRUTINY UPDATE 2023**

The Joint Committee was provided with an update on the three priorities of the Community Safety Strategy 2023-26, the serious violence duty, areas of focus, successful initiatives, performance of the partnership, crime, anti-social behaviour and fire statistics, and current challenges. Representatives of Leicestershire Police were in attendance to answer questions.

During discussion and in response to questions, the following points were raised:

- Working with perpetrators of domestic violence – funding for this initiative has now ended.
- The remit of Martyn's Law (which is currently in draft bill stage).
- Crime statistics and the changes in the way some crimes are recorded.
- Fire and safety checks – which have risen to 5th nationally on the number of checks completed.
- Street-vibe and how it is assessed on where the groups will be held. They are currently being held in Hinckley, but can moved to where the need is.
- 2022/23 and this year has seen a period of community tensions including the unrest in East Leicester, war in Ukraine and pro-Palestine protests at sites in Blaby District. As shown earlier in the report, whilst hate crimes have significantly decreased in 2023/24, the ongoing Hamas/Israel conflict has led to a rise in anti-Semitic and Islamophobic incidents nationally and it is expected that this will be reflected in continued tension and rise in hate crimes locally.
- Engagement with schools regarding child sexual exploitation.
- Fraud and the number of incidents that target older, vulnerable people. There are lots of preventative initiatives which are carried out all year round, working with Trading Standards and other agencies highlighting how to keep safe.

The Police Inspectors also provided an update to changes in the local service. For the Hinckley and Blaby Neighbourhood Policing Area (NPA) this means that there is now one Inspector for Blaby District (Inspector Mat Allingham) and one Inspector for Hinckley and Bosworth Borough (Inspector Neil Whittle). The NPA remains as one NPA with both Inspectors covering for each other for leave and absence.

Members thanked Officers and representatives from the Police for attending the meeting.

### **DECISIONS**

1. That the successes and challenges of the Community Safety Partnership be noted, along with the key proactive initiatives and campaigns that have been undertaken by the Joint Community Safety Partnership Overview and Scrutiny Committee.
2. That the Partnership continues to provide the joint Scrutiny Committee with annual Community Safety Partnership update reports.
3. That the positive work of the Community Safety Partnership to ensure compliance with the Serious Violence Duty be noted.

Reason:

This is the annual report from the Blaby and Hinckley and Bosworth Community Safety Partnership (CSP) as required by the terms of reference of the CSP.

### **182. DATE OF NEXT MEETING**

- 6:30pm on Monday 2<sup>nd</sup> December 2024 at Hinckley & Bosworth Borough Council .

**THE MEETING CONCLUDED AT 6.28 P.M.**

This page is intentionally left blank





## Hinckley & Bosworth Borough Council

Forward timetable of consultation and decision making

Blaby and Hinckley and Bosworth Community  
Safety Partnership (CSP) Joint Scrutiny Commission

19 February 2025

Wards affected: All wards in Blaby District and Hinckley and Bosworth Borough

---

### **Blaby and Hinckley and Bosworth Community Safety Partnership (CSP) Annual Update**

---

Report of: Community Services and Safeguarding Manager (Hinckley and Bosworth)  
Community Services Manager (Blaby)

#### **1. Purpose of report**

- 1.1 To update Scrutiny on the current focus, performance, achievements and challenges of the Blaby and Hinckley and Bosworth Community Safety Partnership.
- 1.2 This is the annual report from the Blaby and Hinckley and Bosworth Community Safety Partnership (CSP) as required by the terms of reference for the CSP.

#### **2. Recommendations**

- 2.1 That Scrutiny notes the content of this report.
- 2.2 That the CSP continues to provide the joint Scrutiny Commission with annual Community Safety Partnership update reports.
- 2.3 That scrutiny notes the work that has taken place which has enabled the Community Safety Partnership and the local authorities to successfully ensure compliance with the Serious Violence Duty, which came into force in January 2023.

### **3. Background to the report**

- 3.1 The Crime & Disorder Act 1998 provides the framework for the establishment of Community Safety Partnerships (CSP's). Membership must include the "Responsible Authorities" as defined by the Crime and Disorder Act 1998.

The responsible authorities on the local CSP are Blaby District Council, Hinckley and Bosworth Borough Council, Leicestershire County Council, Leicestershire Police, Leicestershire Fire & Rescue Service, Integrated Care Boards and Probation.

- 3.2 The CSP has a current 3-year Community Safety Strategy 2023-26 which is available at *Blaby and Hinckley and Bosworth CSP Strategy 2023\_26*. The priorities in the strategy have been developed using information and data about crime and disorder issues across the district and borough and take into account the issues local people consider to be of most concern.
- 3.3 Action plans are developed and refreshed annually to ensure delivery of the Community Safety Strategy. The action plans for 2024-25 are attached at Appendix 1.
- 3.4 External funding to assist in the work of the CSP primarily comes via the Office of Police and Crime Commissioner's (OPCC) Partnership Locality Fund. The Partnership Locality Fund (PLF) is currently confirmed by the OPCC on an annual basis. This enables the partnership to commission and recommission services and initiatives that enable it to meet objectives set in the Community Safety Strategy and contribute to the aims of the Leicester, Leicestershire and Rutland *Police and Crime Plan*.
- 3.4.1 The current funding awarded for 2024-25 to the CSP is £104,104 the split per district and borough is as follows; Hinckley and Bosworth £51,217, Blaby £52,887. Due to LLR wide underspends last year the CSP has received a one off additional £7839 per district/borough for 2024-25.

### **4. Areas of Focus for the Partnership**

- 4.1 The Community Safety Partnership continues to deliver a wealth of work around three key areas of focus within the Community Safety Strategy:

Protecting and Supporting People  
Reducing Offending and Re-offending  
Preventing and Reducing Serious Violence.

- 4.2 The partnership focusses on using evidence-based approaches in our strategic and operational work and has prevention at the core of its work. The partnership works actively in specific locations at specific times, targets known offenders, proactively identifies and supports vulnerable people and works with local people to build confidence and satisfaction with the way we deal with crime and anti-social behaviour.

- 4.3 The Serious Violence Duty, a legal duty to support a multi-agency approach to preventing and tackling serious violence, commenced in early 2023, with duty holders given 12 months to 31<sup>st</sup> January 2024 to meet the duty.

Chapter 1 of Part 2 of the Police, Crime, Sentencing and Courts Act (PCSCA) 2022 requires specified authorities to work together to prevent and reduce serious violence, including identifying the kinds of serious violence that occur in the area, the causes of that violence (so far as it is possible to do so), and to prepare and implement a strategy for preventing, and reducing serious violence in the area. The specified authorities are defined as: Police (Chief Officers of Police), Fire and Rescue Authorities, Integrated Care Boards, Local Authorities (including 'youth offending teams') and Probation Services.

Section 6 of the Crime and Disorder Act (1998) was also amended to ensure that serious violence is an explicit priority for Community Safety Partnerships, and they have a strategy in place to explicitly tackle serious violence.

The CSP has, over the last 3 years, worked hard to ensure it is well placed to meet the duty and have local plans and initiatives that will help to prevent and reduce serious violence in the district and borough. The partnership has a dedicated serious violence plan in place, at Appendix 1.

- 4.4 The Domestic Abuse Act received royal assent in April 2021. The partnership and local authorities continue to work to ensure that we meet the requirements of this Act and continue our proactive work and commitment to providing support to all victims and survivors of domestic abuse.
- 4.5 The CSP has effective partnership structures to enable effective problem solving to tackle issues relating to offending and reoffending. Partnership structures include monthly Joint Action Groups (Hinckley and Bosworth), People and Places Forum (Blaby) and Tactical Groups in both areas. These structures identify emerging threats and put in place solution focussed and holistic actions for individuals and place. The partnership works to tackle issues from a prevention perspective and uses a tiered approach for anti-social behaviour. Actions are taken to ensure individuals have appropriate support and powers and tools are used where appropriate to tackle issues. Early intervention work has continued to be a key part of the Partnership's role ensuring that, wherever possible, vulnerabilities of individuals are identified and addressed early before escalation occurs. Work with vulnerable victims, witnesses and perpetrators takes place daily, appropriate referrals are made and close work with partner agencies has helped to ensure appropriate support is in place.
- 4.6 The partnership continues to focus on ensuring active communication and engagement with communities and services users.

The CSP continue to increase promotion of its successes and key messages via its *CSP Newsletters* in Hinckley and Bosworth and via social media platforms in both areas. Neighbourhood link continues to be used as a

communication method with the community. There are now 11,229 users across the Blaby and Hinckley and Bosworth neighbourhood policing area.

The partnership consults annually with the public to gain their views on crime and anti-social behaviour. Our annual consultation took place from early December 2024 until end January 2025.

The partnership has recently developed a Community Partnership Framework and action plan to further strengthen our community involvement approaches.

- 4.7 In 2023, as part of Leicestershire Police force wide changes to deployment there was a move to more local management. For the Hinckley and Bosworth and Blaby Neighbourhood Policing Area (NPA) this meant that there is now one Inspector for Blaby District (Inspector Mat Allingham) and one Inspector for Hinckley and Bosworth Borough (Inspector Neil Whittle). The NPA remains as one NPA, with both Inspectors covering each other for leave and absence. This has been in place now for over a year and has allowed greater focus on issues specific to each local authority area and focus of neighbourhood policing resources. This tighter geographical management structure has improved partnership working and multi-agency problem solving.

## **5.0 Performance**

- 5.1 The effectiveness of the CSP is measured against performance indicators around crime and antisocial behaviour and against the partnership action plans. Data is both quantitative and qualitative in nature. Performance is also fed back to the Office of the Police and Crime Commissioner (OPCC) for all the projects and initiatives in the action plans that receive funding from the OPCC.

All of the partnership action plans are reported on to the Community Safety Executive Board on a quarterly basis.

- 5.2 Crime and Antisocial Behaviour Statistics

Hinckley and Bosworth Borough									
Time Period	2019/20	2020/21	2021/22	2022/23	2023/24	5 year Trend	2023/24 to date	2024/25 to date	Yr to Date Trend
Total Crime	6950	6441	7153	7763	7516	↑	6139	5839	↓
Violent Crime	2199	2565	2813	3009	2864	→	2333	2209	↓
Domestic Abuse	1191	1566	1701	1299	1350	↓	1104	979	↓
Domestic Burglary	413	205	212	331	328	→	257	289	↑
Burglary (Business)	240	89	104	98	122	→	99	105	↑
Vehicle Crime - Theft From	677	326	273	339	351	→	270	282	↑
Vehicle Crime - Theft of	204	163	141	268	257	↑	217	184	↓
ASB sentinel				517	488		406	387	
Antisocial Behaviour calls								2933	
Hate Crime	93	122	178	193	144	↓	118	102	↓

Blaby District									
Time Period	2019/20	2020/21	2021/22	2022/23	2023/24	5 Year Trend	2023/24 to date	2024/25 to date	Yr to Date Trend
Total Crime	5988	5473	6385	6849	6853	↑	5707	5214	↓
Violent Crime	1795	2104	2424	2390	2263	→	1906	1687	↓
Domestic Abuse	1053	1369	1469	1122	1133	→	948	831	↓
Domestic Burglary	425	241	258	413	381	↓	321	347	↑
Burglary (Business)	150	73	64	78	91	↓	70	43	↓
Vehicle Crime - Theft From	740	406	371	353	399	↓	326	261	↓
Vehicle Crime - Theft of	164	113	147	187	185	→	154	136	↓
ASB sentinel				294	202		176	203	
Antisocial Behaviour calls								2826	
Hate Crime	86	129	150	157	132	→	110	117	→

Points of note:

There is a decreasing trend of violent crime offences over the last two years. This is positive and the wealth of work undertaken by the CSP around serious violence is included in this report.

Some increases are currently being seen for burglary and vehicle crime offences but the long-term trends are static or reducing. More information on burglary and vehicle crime work is covered in section 6.3.

*Leicestershire anti-social behaviour data* shows a downward trend over a two-year period for both districts.

## 5.3 Leicestershire Fire and Rescue Service (LFRS) Statistics

### Blaby District - April 2023 to March 2024

Ref	Key Corporate Indicator	Apr	May	Jun	Jul	Aug	Sep	Oct	Nov	Dec	Jan	Feb	Mar	Tot
	<b>Incidents Attended</b>													
1.1	Total incidents	54	63	68	53	67	64	59	54	57	50	66	49	704
1.2	Fire incidents	13	15	22	19	21	12	10	11	15	5	13	12	168
1.2a	Primary fire incidents	10	6	9	8	10	6	7	6	12	4	12	8	98
1.2b	Secondary fire incidents	3	8	13	11	11	6	2	5	3	1	1	3	67
1.2c	Chimey fire incidents	0	1	0	0	0	0	1	0	0	0	0	1	3
1.3	Fire false alarms	17	18	27	17	24	26	23	13	13	13	21	11	223
1.3a	Due to apparatus	6	9	10	6	9	9	9	3	7	5	13	3	89
1.3b	Good intent	10	8	17	10	15	17	14	10	4	8	8	8	129
1.3c	Malicious (attended)	1	1	0	1	0	0	0	0	2	0	0	0	5
1.4	Non-fire incidents	24	30	19	17	22	26	26	30	29	32	32	26	313
1.4a	Non-fire false alarms	3	1	0	1	0	2	0	0	0	0	1	0	8
1.4b	Special service	21	29	19	16	22	24	26	30	29	32	31	26	305
-	Road Traffic Collision (RTC)	4	6	7	3	4	8	3	12	11	6	7	5	76
-	Assist other agencies	3	10	3	2	2	2	7	7	6	7	12	8	69
-	Medical Incident - Co-responder/First Responder	2	3	1	1	2	2	0	1	7	3	1	2	25
-	Effecting entry / exit	2	3	2	3	4	3	3	4	1	3	1	2	31
-	Flooding	0	3	1	0	0	0	1	1	1	9	4	1	21
-	Suicide/attempts	1	1	0	1	3	0	2	0	0	0	0	0	8
-	- suicides	0	0	0	0	1	0	0	0	0	0	0	0	1
2.1	Fatalities in fires	0	0	0	0	0	0	0	0	0	0	0	0	0
2.2	Non-fatal casualties in fires	0	1	0	0	1	0	0	0	0	0	0	0	2
2.3	Fatalities in non-fire incidents	1	0	0	0	1	2	1	2	0	0	0	4	11
2.4	Non-fatal casualties in non-fire incidents	2	10	5	5	4	2	7	6	8	5	5	4	63

### Hinckley & Bosworth District - April 2023 to March 2024

Ref	Key Corporate Indicator	Apr	May	Jun	Jul	Aug	Sep	Oct	Nov	Dec	Jan	Feb	Mar	Tot
	<b>Incidents Attended</b>													
1.1	Total incidents	56	58	89	75	75	86	84	55	51	51	55	56	791
1.2	Fire incidents	10	12	27	8	18	19	17	11	12	7	3	8	152
1.2a	Primary fire incidents	5	5	17	5	13	14	14	7	7	3	2	6	98
1.2b	Secondary fire incidents	3	7	10	3	5	5	3	3	4	2	1	2	48
1.2c	Chimey fire incidents	2	0	0	0	0	0	0	1	1	2	0	0	6
1.3	Fire false alarms	21	14	21	28	25	37	38	19	16	13	24	12	268
1.3a	Due to apparatus	5	4	5	3	11	18	22	4	11	1	11	5	100
1.3b	Good intent	15	10	16	25	14	19	16	14	5	12	13	6	165
1.3c	Malicious (attended)	1	0	0	0	0	0	0	1	0	0	0	1	3
1.4	Non-fire incidents	25	32	41	39	32	30	29	25	23	31	28	36	371
1.4a	Non-fire false alarms	0	1	0	1	0	1	3	0	1	3	1	2	13
1.4b	Special service	25	31	41	38	32	29	26	25	22	28	27	34	358
-	Road Traffic Collision (RTC)	6	8	17	13	12	8	6	11	4	5	8	11	109
-	Assist other agencies	4	6	7	5	7	5	8	4	8	10	6	7	77
-	Medical Incident - Co-responder/First Responder	4	2	5	1	2	3	0	3	2	2	0	3	27
-	Effecting entry / exit	3	5	4	6	2	2	3	5	3	0	3	2	38
-	Flooding	1	1	0	2	1	3	0	0	0	2	5	2	17
-	Suicide/attempts	3	0	0	2	1	1	0	0	1	0	1	0	9
-	- suicides	0	0	0	0	0	0	0	0	0	0	0	0	0
2.1	Fatalities in fires	0	0	0	0	1	0	0	0	0	0	0	0	1
2.2	Non-fatal casualties in fires	0	0	2	0	2	1	0	0	2	0	0	0	7
2.3	Fatalities in non-fire incidents	0	0	0	1	1	3	1	1	0	1	0	2	10
2.4	Non-fatal casualties in non-fire incidents	6	7	8	5	7	5	4	9	4	4	3	11	73

Based on previous year:

Overall Blaby and Hinckley & Bosworth have seen the total number of incidents decrease. The significant point from this data is that fire incidents have seen the biggest decrease. This decrease can be attributed to the volume of fire safety education initiatives and increased number of home safety checks completed over the year.

There has been an upward trend in the number of fire false alarms and non-fire incidents (primarily Road Traffic Collisions (RTC) please refer to section 6.5) despite an increase in fire safety audits and working with premises to reduce false alarms. Numerous road safety initiatives have been held to promote safer driving and fatal four.



## 5.4 Serious Violence

The CSP has an excellent working relationship with the Leicester, Leicestershire and Rutland (LLR) Violence Reduction Network (VRN) and have worked effectively to ensure compliance with the Serious Violence Duty that came into force on 31 January 2023. Our readiness as a CSP was assessed via a local self-assessment, which was completed internally and then reviewed with a member of the VRN team. The self-assessment showed both local authorities and the CSP to be in an excellent position to meet the duty.

Specified authorities, including Hinckley and Bosworth Borough and Blaby District Councils, and the VRN participated in a national readiness assessment commissioned by the Home Office and undertaken by Crest Advisory. This concluded that our partnership across LLR is 'Mature, Demonstrating Best Practice' in relation to the duty requirements reflecting our work so far through the VRN and CSP. This is the highest rating possible.

The CSP is focused on ensuring continuous improvements in our responses and the self-assessment has enabled us to further strengthen areas of our work. Examples include the creation of a Community Partnership Framework and action plan to further strengthen our community involvement approaches; and to some upcoming training in early 2025 on the 'Theory of Change' model to enable us to better evidence outcomes.

Our most recent Serious Violence Strategic Needs Assessment (2023-24) shows a decreasing trend across the area in serious violence compared to the previous year. Our strategic needs assessment has informed our Serious Violence Plan provided at Appendix 1. We continually use data to inform our operational responses. Dedicated police patrols in serious violence and anti-social behaviour hotspots are taking place with local officers deployed on foot in high visibility uniform for maximum reach. Funding has recently been secured to provide additional youth outreach work in these key hotspot locations in Hinckley town centre at key times until April 2025.

Op Sceptre is a national police operation supported by Leicestershire Police and the CSP and an ongoing approach to tackling knife crime. There were two dedicated weeks of action last year in May and November with successful arrests, knife sweeps at local parks and knives surrendered to amnesty bins. Op Sceptre work continues throughout the year to tackle violent crime and knife crime, including knife arch deployments in schools and in the nighttime economy, providing education and engagement using the message of the 'We Don't Carry' campaign, continued test purchasing operations to ensure stores in our communities are robust with regards to the sale of knives and ensuring there is a high and visible presence of officers in hotspot areas.

## 5.5 Domestic Abuse

The partnership continues to work to support victims and survivors of domestic abuse. The Blaby and Hinckley and Bosworth council's domestic abuse outreach services provide emotional and practical support for adult victims/survivors of domestic abuse. The services work on a one-to-one basis with service users and via group programmes which help to enable survivors to move on from their experiences. Therapeutic work is also delivered with children and young people who have been affected by domestic abuse.

	1 <sup>st</sup> April 23 – 31 <sup>st</sup> March 24	1 <sup>st</sup> April 24 – 30 <sup>th</sup> Sept 24
Victims/ Survivors supported via outreach service	226	135
Number of domestic abuse group programmes completed	12	8
Number of children affected by domestic abuse receiving therapeutic support	90	32

It is imperative that our outreach services remain survivor led. Giving survivors a voice, listening to the needs and wishes of survivors and then using this to shape the service has led to changes that have ensured better outcomes for survivors. Service users are supported in sharing decision making and goal setting to put in place a plan of action they need to move forward. Recent projects that have been completely survivor led are the survivor coffee mornings and a survivor art project.

The CSP leads a Domestic Abuse Forum which brings together key stakeholders across the borough and district to ensure wider partners are working together, enabling collaboration, forward planning, and networking to improve responses to domestic abuse. Key partners attend including social care, public health, local legal services, housing, community safety, Department of Work and Pensions and the police. The CSP holds a successful annual domestic abuse networking event to highlight this collaboration and partnership response.

The Ministry of Housing, Communities and Local Government (MHCLG) provides funding to county councils and district councils to support their work in the duty placed on them via the Domestic Abuse Act 2021. District and borough councils receive in the region of £33K each per annum. Housing plays an important role in domestic abuse, where housing uncertainty can be used by perpetrators to control and coerce survivors. A lack of safe, secure and high-quality housing can put people experiencing domestic abuse at risk of homelessness and therefore hesitant to speak out. Locally Hinckley and Bosworth Borough Council and Blaby District Council use their MHCLG funding to provide a specialist domestic abuse post within their housing options teams. The posts work on domestic abuse related housing options cases to enable survivors of domestic abuse to access specialist support services and to access safe accommodation. This ensures that survivors who



may find themselves homeless and need access to secure accommodation are supported by an officer who has knowledge around domestic abuse to support them effectively. The officer works closely with our Domestic Abuse Outreach Services ensuring a streamlined service around practical and emotional support for survivors.

The CSP set up a new scheme in late 2024 to provide target hardening packs for domestic abuse survivors. This target hardening is used alongside appropriate risk assessments. The packs include items such as window alarms, personal alarms, solar lights, alarmed door wedges etc. There is also access to ring doorbells for appropriate cases.

Domestic abuse is a local policing priority; daily scrutiny is provided of live demand and suspects outstanding. This is then fed through to dedicated officers to progress enquiries. The Domestic Abuse Resolution Team (DART) is a central police resource working with local policing. Key areas of business include the creation of problem management plans and identification of high threat relationships. Individuals that are suitable are signposted to local outreach teams through this process. Supervisors provide additional scrutiny in the following areas: domestic abuse demand, outstanding suspects, arrest rates, investigative positive outcomes and local training.

## 5.6 Children and Young People

The CSP continues to engage with high numbers of young people via prevention and awareness work in schools and other young people settings. Work has been delivered on topics such as exploitation, substance misuse, safe driving, knife crime, mental health, diversity, anti-social behaviour, and healthy relationships. In 2023-24 the partnership engaged with over 4000 young people via their awareness and prevention work in educational and other young people settings. Between 1<sup>st</sup> April 24 – 31<sup>st</sup> Dec 24 we have already engaged with 2802 young people in Hinckley and Bosworth and delivered 24 school workshops in Blaby. Workshops are adapted in line with emerging trends such as a hate crime input last year in a primary school, a series of domestic abuse/healthy relationship workshops at both primary and secondary schools and being part of a wellbeing event at a secondary school.

The partnership continues to commission specialist youth outreach and diversionary provision via Streetvibe Young People's Service. In 2023- 24 Streetvibe had 1779 positive engagements with young people in hotspot areas for anti-social behaviour and between 1<sup>st</sup> April 24 – 30<sup>th</sup> Sept 24 have had 710 engagements.

Work has continued with Leicester City in the Community who continue to deliver a sports outreach project, running weekly from Green Towers and Brockington College. Police attend sessions to build positive relationships with young people and there are other enrichment activities such as tournaments and visits to the Space Centre. 178 young people benefited from attending the sessions in 2023-24 and from 1<sup>st</sup> April - 30<sup>th</sup> Sept, 115 young people have

attended sessions. One participant was selected to represent Leicester City in the Premier League Kicks regional and national tournaments. Several participants were upskilled to take a referee course, providing them with leadership development and practical qualifications. Through this achievement, they have begun officiating local games, earning payment for their time, and building a sense of responsibility and pride in their work.

Mentors in Violence Programme (MVP) is a peer mentoring programme run by the Violence Reduction Network that gives young people the chance to explore and challenge the attitudes, beliefs and cultural norms that underpin violence and bullying. It addresses a range of behaviours and uses a 'by-stander' approach where individuals are not looked on as potential victims or perpetrators but as empowered and active bystanders with the ability to support and challenge their peers in a safe way. The MVP is currently being delivered in 2 schools in Hinckley and Bosworth and Blaby.

The YEO (Youth Engagement Officer) is a key member of the neighbourhood policing team. They act as the police lead for the Youth JAG to ensure all local partners are aligned with regards to policing activity. In quarter 3 alone, they delivered 19 school workshops, reaching over 1660 students. These include key topics such as online awareness, knife crime awareness and county lines. They also complete lunch time drop-in sessions, children's home visits and various partnership and cadet events across the policing area.

## 5.7 Prevent

The Prevent Duty was established by the Counter-Terrorism and Security Act 2015 and places a duty on specified authorities to have 'due regard to the need to prevent people from becoming terrorists or supporting terrorism.'

The Prevent Duty guidance assists statutory partners to understand how to comply with the Prevent Duty. This duty guidance has been updated to reflect several recommendations of the Independent Review of Prevent published in February 2023.

Section 5 of the Prevent Duty guidance (2023, as amended in January 2024), subsection 85 states, "It is important for specified authorities to identify and consider opportunities to disrupt those who seek to radicalise others into conducting terrorism- related activity or supporting terrorism, or who perpetuate extremist ideologies linked to terrorism. This may mean having policies in place that, where appropriate, limit radicalising influences (including online), or ensure that facilities are not used inappropriately." Both local authorities have put in place venue hire policies and guidance during 2024 to respond to this guidance.

Both local authorities have refreshed their local Prevent plans in 2024 and have robust training plans. Some updated face to face front-line officer training has recently been released by the Home Office and both authorities will start delivery of this training during 2025.

## 5.8 Hate Crime

Hate Crime is an area of crime that is under reported and has a significant impact on the victim. The CSP works hard to raise awareness of hate crime and to ensure that people are aware of how to report it. Regular promotion of services available for hate crime has taken place to encourage people to report and seek help.

The CSP delivered enhanced hate crime awareness during national hate crime awareness week in October 2024, with social media campaigns, launch of the Blaby Youth Council Hate Crime Video and workshops on diversity in schools.

Both areas are engaged in work to develop a LLR Hate Crime Hub, this hub will look to provide a central repository for information and guidance regarding hate crime for professionals and the community.

The police have dedicated hate crime supervisors on the local policing area ensuring all hate crimes and incidents are monitored daily. To aide compliance and satisfaction, 7 and 28 day supervisory call-backs are now factored in.

## 5.9 Night-time Economy

The CSP has continued a wealth of work to make the night-time economy safer. We have robust structures to partnership manage any issues relating to the night -time economy. These include effective operational work between CCTV, Police and licensees, effective Pubwatch schemes and the use of night-time economy marshals at key times. Last year the CSP provided night-time economy marshals to work alongside the police to deescalate issues and keep people safe on key nights during the World Cup and over the Christmas period.

The CSP have visited establishments across Hinckley and Bosworth promoting anti-spiking, the don't drink drive campaign, Ask for Angela and domestic abuse support during December 2024. More than 30 premises were visited across Hinckley and Bosworth. A talk was also given to Pubwatch to raise awareness.

During 2024 the 'Ask for Angela Scheme' has been refreshed, and all participating venues have been contacted to ensure they are still active members of the scheme and are training staff appropriately. This scheme enables people who might feel uneasy on a date or night out to discretely approach staff and request assistance. Staff at participating venues have been trained to recognise the discrete safe word, 'Angela', alerting them to a problem. The member of staff can then offer to call a taxi, provide a safe place whilst people contact a friend, or help people to leave the venue if they are feeling unsafe due to someone else's actions, words, or behaviour. We now have 50 participating venues across the borough and district. More

information and details on venues taking part in the scheme can be found on [www.leicestershire.gov.uk/AskforAngela](http://www.leicestershire.gov.uk/AskforAngela)

#### 5.10 Rural Crime

The Rural Policing Team continue to tackle issues that matter most to the rural community. They link in with local neighbourhood policing teams for knowledge and support and they are in regular contact with the local National Farmers Union and members of the rural community via the dedicated rural WhatsApp groups. The WhatsApp groups continue to be well thought of, not only allowing participants to share information regarding suspicious incidents, but they also allow Police to share team results and reach out for information to resolve live incidents such as loose livestock in the road.

The team continue to hold Hub meetings throughout the year with multiple partner agencies such as the RSPCA and Environmental Agency, of which countywide CSP's are invited and attend, and the team continue to work closely with those partner agencies outside of the meetings to carry out warrants and deal with local issues. Over recent months a number of hare coursing incidents have been reported with damage to gates and crops and other wildlife offences in relation to bats which has led to joint work being carried out with ecologists and Natural England. Incidents of fly-grazing of horses has also begun to increase and although not a Police matter, advice and support is being provided. Each week the team join a regional meeting with other forces to keep sight of emerging threats and results. The recent team recovery of a tractor stolen from our neighbouring force Warwickshire was gratefully received.

#### 5.11 Retail Crime

Local police, the borough council and Hinckley Business Improvement District (Hinckley BID) have been working closely with partners and businesses to reduce crime in Hinckley Town Centre. Retail crime has been a focus. The use of retail radios, the DISC system (which allows timely sharing of information between police, CCTV and businesses), town centre policing, CCTV cameras and close working with businesses has yielded excellent results with arrests and property recoveries. This approach has resulted in high success rates in the detection of retail theft; well above the Leicestershire Police average. Over the last year, with support from partners, the police have been able to deal with a large number of retail thefts in Hinckley, putting a number of offenders in prison and recovering a large amount of stolen property. Counterfeit electronics and other illegal goods have also been removed from sale in Hinckley town centre. A quantity of illegal items has been recovered this year, including counterfeit smartwatches and earphones, which are unsafe and not manufactured to correct safety standards. A large amount of illicit tobacco and illegal vapes were also recovered by the Police and colleagues from the Borough Council's licensing team. This year the CSP has provided funding, via the Police and Crime Commissioner's funding, to continue the use of the DISC system, which now has 139 registered users.

A Hinckley shop which sold illegal cigarettes to undercover Trading Standards officers on eight occasions and had more than 1,800 packets of illegal tobacco seized during four enforcement visits has been closed down for three months. Easy Shop in Regent Street must close until 15 April 2025 under the terms of an order granted at Leicester Magistrates Court on Wednesday 15 January, following a joint operation by Leicestershire County Council's Trading Standards service and Leicestershire Police.

The police have continued to run regular pro-active police operations in Hinckley Town Centre which involve high visibility and plain clothed patrols.

A small, dedicated team of officers assigned to spree offenders have been, in part, responsible for an increase in positive outcomes achieved. This approach of using a dedicated team targeting policing of spree and repeat offenders in areas of high crime has seen outcomes across a number of crime areas, in the first year this has included 600 crimes solved, 84 arrests and 63 individuals charged and remanded. The spree crime team has worked actively with the community, encouraging residents to report suspicious activities, and fostering a partnership that enhances public safety improving the way businesses report crime and improving evidential quality. The operation has implemented a retail crime package for local businesses with annex documents that streamline the investigative process and makes a positive outcome in court much more likely.

A sharp rise in shoplifting reports from 2 particular shops in Blaby District led to a problem-solving plan being put in place. Police close liaison with the retail units has had a positive impact on shoplifting offences. Fosse Park has also benefitted from extra resources including high visibility and plain clothed patrols. We have recently secured grip funding for ASB patrols at Fosse Park, given the amount of footfall and some of the issues there this funding has allowed us to put extra patrols in place. This has not only seen very positive comments from Fosse Park management but also a sharp increase in detected crimes as well as a flattening of the usual Christmas spike in theft person on that beat. This has worked mainly by officers being present when offences are occurring and was particularly useful in the run up to Christmas. The funding has now finished however the police continue to complete patrols as part of this work.

## 5.12 ASB enforcement

	Active cases April 1 <sup>st</sup> 24- end Dec 24	ASB Enforcement April 1 <sup>st</sup> 24- end Dec 24
Blaby People and Places Forum	9	1 Closure order 3 warning letters
Hinckley and Bosworth:		
Adult Joint Action Group (JAG)	18	3 Closure orders 1 Ext of Closure Order
Youth Joint Action Group	13	4 Community Protection Warning letters 10 Anti-social behaviour contracts

Note: active case figures above are only for cases at our JAG / People and Places structures which manage the highest risk cases.

A project was launched in 2024 with funding from the OPCC to purchase 30 smart doorbell cameras to give out to those who are the high-risk victims of ASB/crime. This helps reduce risk, increases feelings of safety and provides potential evidence. Referrals to the scheme are managed via the above partnership structures.

## 5.13 Campaigns

The CSP successfully delivered 25 campaigns in 2023-24 which focussed on raising awareness, increasing reporting, reducing offences of emerging threat and seasonal crime trends, and ensuring people know how to access support. A similar amount of campaign work will be delivered during 2024-25. The CSP has also attended a variety of community events, such as local patch walks, events with high footfalls such as motor shows and Christmas events and cost of living events.

In 2024 the CSP has delivered a number of geofencing campaigns. Geofencing allows us to target messages to people in a particular area. This has meant that we have been able to better ensure our campaign messages are reaching the right audience. These campaigns have had high reach numbers and are a mechanism that will be increasingly used by the CSP.

## **6.0 Current Challenges and Emerging Threat**

6.1 In summary the CSP faces the following performance challenges:

6.2 Rising costs of food, fuel and housing have seen a national increase in shop theft and other acquisitive crime. The significant amount of work taking place to tackle shoplifting is detailed in 5.11.

6.3 Burglary and vehicle crime continues to be a challenge. There have been significant arrests which have impacted on reductions of offences, but the road network makes Hinckley and Bosworth and Blaby particularly susceptible to cross border criminality which can be difficult to plan for or to predict. The local neighbourhood police work closely with Warwickshire Police to tackle cross border criminality. The CSP have also funded burglary target hardening packs which are distributed to victims of burglary and those in the near vicinity of a burglary. Packs include things such as window and door alarms, CCTV stickers, light timers etc

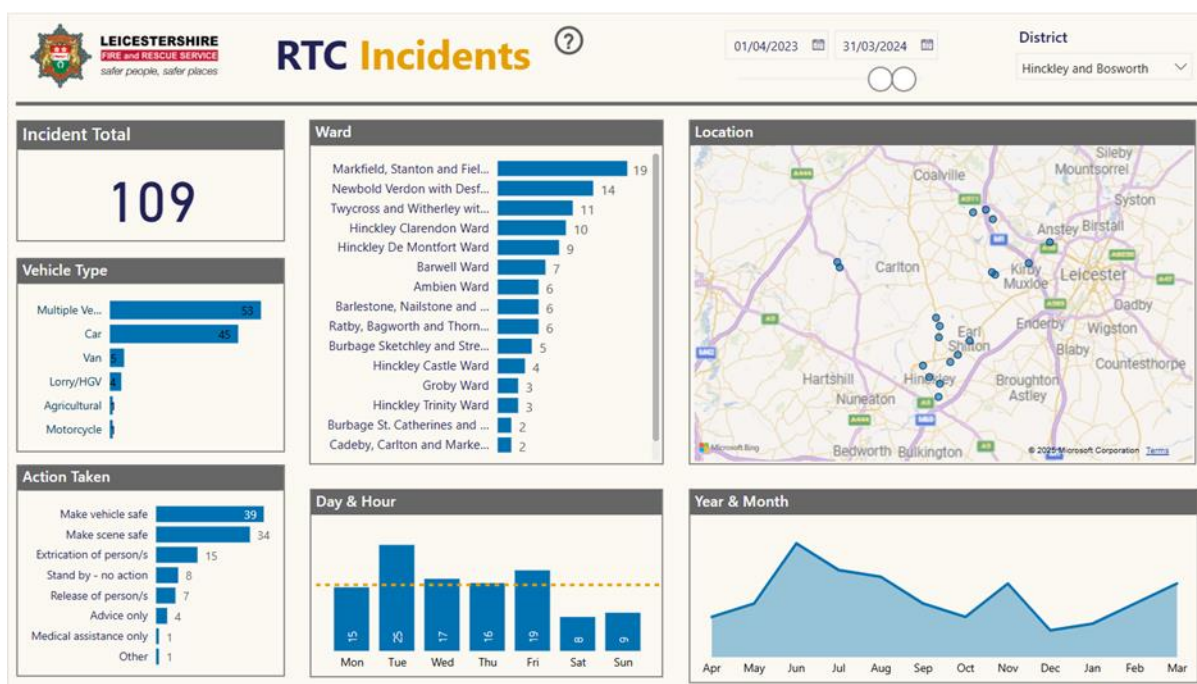
6.4 County Lines continues to be an ongoing threat. Local Police working in partnership with Hinckley and Bosworth Borough Council, Blaby District Council and Leicestershire Police Intelligence Services continually monitor and respond to disrupt any county lines that may impact on our area.

6.5 Road Traffic Collisions

The total number of road traffic collisions attended by LFRS have increased based on a 3-year average. Multiple initiatives focusing on road safety reduction have taken place to educate the community on the fatal four (speeding, driving under the effects of drugs or alcohol, not wearing a seatbelt and mobile device use) and safer driving habits. However, with this upward trend - non fire fatality figures remained similar to the previous year. Please note that the current year to date has seen a further upward trend increase in serious RTC incidents. The police continue to run road safety operations including Fatal4 Operations and a dedicated road safety operation, Operation Flux, to focus on certain locations.

LFRS data on RTC incidents is shown below:

Hinckley and Bosworth 2023/24:



Blaby 2023/24:



- 6.6 Currently dedicated funding for the work of the Community Safety Partnership comes from the Police and Crime Commissioner in the form of a Partnership Locality Fund. Funding is agreed on an annual basis which does not facilitate long term planning and commissioning. The funding landscape could be subject to changes in future years.



## 6.7 Community and Cultural Tensions

### Franklin Park:

After the tragic death of Bhim Kohli on Franklin Park, Braunstone Town Leicestershire Police's Murder Investigation Team (MIT) has been working on the case, charging two people for their involvement, they are awaiting trial. The local team at the NPA has been working with the community to deal with any incidents that occurred in the run up to this murder, a precis of the work done by the CSP is shown below:

- We recognised that there was some community concern about ASB in the area of Franklin Park over the summer leading up to the murder of Bhim Kohli.
- We saw from our data that we had not had a lot of reporting of ASB in the area but also considered that we may have an element of under reporting.
- We decided to carry out a survey of the local people to check for issues they faced. We checked this with our LIAG and the victim's family prior to starting it.
- We mapped the area to target houses with a view of the park and on Bramble way, compiling a spreadsheet of addresses and surveyed 40 addresses.
- We then carried out a drop in event at the civic centre (very close by) the following week. We advertised this by leaflet. These leaflets also featured details on how to report crime/asb. We did this as a mop up session for those people who maybe didn't want to speak to us at the door.
- MIT and local police reviewed the various reports highlighted to MIT that did not fall into their remit for the murder itself but could be considered ASB or crime.
- Youth workers have been to the park to engage with the park users.
- A gradual reduction in police presence has seen a return to normality

We have charged 2 youths with a racially aggravated offence committed in the weeks prior to the murder, they are not the same youths charged or arrested for the murder. We await their court date.

### UTACS summary:

UAV Tactical Systems (UTacS) is a company based in Blaby District which is involved in the manufacture of unmanned drone equipment. The site has been the target of regular protests for several years. These issues have calmed since the large-scale protest we saw towards the end of summer 2024. The regular, less violent protests have also lessened, where they were

around twice a month, they have reduced to an 'every now and again' occurrence. We expect these to pick up again in the summer and already have plans in place to deal with them. As always, we need to facilitate reasonable and peaceful protest, but prevent serious disruption to the community, businesses or crimes such as criminal damage.

Southport:

After the tragic deaths in Southport in 2024 we saw country wide disorder last summer, however Leicester, Leicestershire and Rutland did not see protests on such scale, nor did we see this disorder. LLR saw one gathering in Leicester City centre however this passed with very little incident. We put this down to the policing presence we have in communities and the extra policing we put in place in certain areas but also the messaging done by community leaders around the issues. Officer's duties were changed, and we were put onto public order duties during this time, not only to deal with any potential incidents in LLR but also to respond to calls for extra officers from other forces, who were required on occasion.

6.8 CSP partners continue to see high demand for services.

6.9 The Community Safety Partnership continues to work in partnership to tackle a wide variety of issues and has increasing statutory responsibilities via the new Serious Violence Duty.

## **7. Exemptions in accordance with the Access to Information procedure rules**

7.1 To be taken in open session.

## **8. Financial implications [CS]**

8.1 Total funding from the OPCC to the Community Safety Partnership for 2024-25 is £104,104. This is split as follows: Hinckley and Bosworth £51,217, Blaby £52,887. Due to County wide underspends in 2023-24, the CSP has received one- off additional funding of £7,839 per district/borough for 2024-25.

8.2 Additionally for 2024-25, Hinckley & Bosworth received £35,188 and Blaby £35,791 from MHCLG for Domestic Abuse.

## **9. Legal implications [ST]**

9.1 None

## **10. Corporate Plan implications**

10.1 This report relates to priority ambitions of Hinckley and Bosworth Borough Council's Corporate Plan 2022-25, namely:

- People
- Place

## **11. Consultation**

11.1 Relevant partners and stakeholders were consulted in the formulation of this report.

11.2 The CSP consult with the community annually to inform their work.

## **12. Risk implications**

12.1 It is the council's policy to proactively identify and manage significant risks which may prevent delivery of business objectives.

12.2 It is not possible to eliminate or manage all risks all of the time and risks will remain which have not been identified. However, it is the officer's opinion based on the information available, that the significant risks associated with this decision / project have been identified, assessed and that controls are in place to manage them effectively.

12.3 The following significant risks associated with these report / decisions were identified from this assessment:

### **Management of significant (net red) risks**

<b>Risk Description</b>	<b>Mitigating actions</b>	<b>Owner</b>
Performance Risks identified as challenges under Section 6 of this report	Performance risks are managed on a regular basis via tactical groups and action plans are in place.	RB/RH

## **13. Knowing your community – equality and rural implications**

13.1 The Community Safety Partnership delivers robust consultation with the community, partners, and stakeholders in the formulation of its strategy and plans.

13.2 The Community Safety Partnership uses data and intelligence to inform its work.

13.3 The impact on rural areas of the borough and district has been addressed within the Partnership's action plans 2024-25.

## **14. Climate implications**

14.1 Work will be delivered to limit carbon impact where possible, for example virtual methods of engagement and paperless systems.

## **15. Corporate implications**

15.1 By submitting this report, the report author has taken the following into account:

- Community safety implications
  - Environmental implications
  - ICT implications
  - Asset management implications
  - Procurement implications
  - Human resources implications
  - Planning implications
  - Data protection implications
  - Voluntary sector
- 

Background papers: Appendix 1 –CSP Action Plans 2024-25

Contact officer: Rachel Burgess 01455 255746  
Rebecca Holcroft 0116 272 7537

Executive member: Councillor M Mullaney (Hinckley and Bosworth)  
Councillor L Phillimore (Blaby)

Serious Violence Prevention Plan for Blaby and Hinckley and Bosworth Community Safety Partnership 2024-25				
Theme	Action	Owner	End Date	Short, Medium and Long-term Impact Measures
Data Sharing and Analysis	To continue to access and use the serious violence dashboard and use the VRN data analyst to inform strategic and operational planning.	Rachel Burgess/ Rebecca Holcroft	Mar-25	Improved use of resources in tackling serious violence. Data driven initiatives and projects to prevent and reduce serious violence.
	Refresh Strategy and Plans annually based on refreshed SNA	CSP Exec	Mar 25	Strategy and plans reflect findings of latest SNAs
Community and Young Person Involvement	Work closely with local VCS to encourage use of local community grant schemes, OPCC and other funding sources to best support work around crime and violence prevention	HBBC/BDC/VCS Hubs	Mar 25	VCS involvement evidenced. Community grants used for prevention. Reduction and prevention of Serious Violence
	Adopt and use the VRN Community Partnership Framework	CSP Exec	Nov-24	Evidence of community voice built into local plans and interventions. Increased Insights from wider community.
Establishing the Conditions (contextual prevention)	Continue to improve relationship with Schools. <ul style="list-style-type: none"> <li>Facilitating and improving information sharing and feedback.</li> <li>Identifying young people at risk through many channels – include Health, schools</li> <li>Building rapport and relationships with parents.</li> <li>Building relationships with Police and schools</li> <li>Schools' programmes – MVP in Primary and Secondary</li> </ul>	CSP Tactical Group	Mar-25	Evidence of joint working and joint initiatives with schools
	Ensure that the CSP continues to meet the statutory duty placed on it by the serious violence duty, and work to meet actions identified in our local SV Delivery Plan to ensure continuous improvement	CSP exec/CSP Tactical Groups	Nov 24	Implement areas for improvement in SV Delivery Plan
	Continue close effective working with VRN to maximise outcomes at a local level	CSP Tactical Group	Mar-25	Evidence of work with VRN VRN supported interventions at a local level. Close working with VRN partnership role.

				Link with VRN Sports Partnership
	Continue to develop trauma informed practises within CSP	HBBC/BDC	Mar-25	No of staff/partners trained Trauma informed programmes Trauma informed practise evidence
	Continue positive work with Night-time Economy partners that focusses on long term change	HBBC/BDC/ Police	Mar-25	Reduction in NTE violence Evidence of social norm/ bystander approaches Evidence of positive partnership working with NTE partners Consideration of Purple Flag for Hinckley Town Centre
<b>Preventing the Onset (primary prevention)</b>	Deliver preventative and trauma sensitive schools work on healthy relationships, mental health, ASB, knife crime and exploitation. Inputs to be adaptable and tailored to meet the changing needs of young people. Consideration around any improvements that can be made to local Police-Educational settings work around Knife Crime.	HBBC/BDC/ Police	Mar-25	No of young people engaged and impact measures. Reduction in young people involved in Serious Violence New/ adapted young people inputs.
	Increase membership of key NTE schemes such as Pubwatch, Licensee Forums, Ask for Angela	HBBC/BDC/ Police	Mar-25	No of venues actively involved. Prevention and early intervention re: violence in NTE
	Support the Safer Streets Violence Against Women and Girls work with a focus on preventative work re: sexual violence involving young people.	HBBC/BDC	Mar-25	No of new interventions/ initiatives delivered
	Work to proactively tackle violence in the NTE in key hotspot areas. Including dedicated ops, partnership setups and NTE marshals, campaigns such as You're Right, That's Wrong Campaign, initiatives such as Ask for Angela/Pubwatch/ anti spiking work	HBBC/Police	Mar-25	People feel safer in the NTE. No of serious violence offences in the NTE reduced
	Commission specialist youth outreach provision	HBBC/BDC	Mar-25	No young people engaged via outreach. Reduction in young people involved in Serious Violence. Theory of Change Model.
	Provide a Therapeutic Children's service for children and young people affected by domestic abuse	HBBC/BDC	Mar-25	Health and wellbeing outcomes via outcome star. No young people one to one, no young people group

				work. Reduction in young people involved in Serious Violence
	Parental Conflict & impact on Children and Young People awareness raising for professionals.	Family Hubs/LCC	Mar-25	Using Parental Conflict toolkit as best practice guidance in recognition & response to parental conflict. Training is ready and can be circulated to CSP leads.
	Work with Leicester City in the Community to support delivery of Kicks programmes and sporting activities	Police/HBBC /BDC	Mar-25	Serious violence reports are reduced Positive outcomes for young people
<b>Intervening Early to Halt Progression (secondary prevention)</b>	Work in collaboration with schools to identify individuals of concern at an early stage and work jointly towards positive outcomes for young people	HBB/BDC	Mar-25	Number cases via youth JAG and joint working on cases.
	Effective partnership problem solving via the JAG/PPF to enable partnership to tackle issues relating to violence and to ensure holistic partnership approach for individuals of concern.	HBBC/BDC/ Police	Mar-25	Number of cases. Case studies. Reduction in people involved in Serious Violence.
	Targeted work in hotspot locations / at peak times by beat teams and outreach to engage with young people, tackle issues and prevent escalation (Linked work to LLR wide ASB/SV hotspot funding)	Police/HBBC/ BDC	Mar-25	Evidence of targeted work. Reduction in numbers of young people involved in Serious Violence
	Highlight support available for domestic abuse survivors, work via dedicated police teams to tackle domestic abuse and target offenders.	HBBC/BDC/ Police	Mar-25	Evidence of promotion of support services Reduction in outstanding domestic abuse suspects Evidence of positive outcomes for survivors
<b>Reducing Impact and Recurrence (tertiary prevention)</b>	Work as partners to support development of DA perpetrator support in the area- including Building Better Relationship Programme	LCC/BDC/HBBC	Mar 25	No engaged in perpetrator programmes No engaged in Building Better relationship programme Outcomes measured via programmes
	Provide a dedicated domestic abuse outreach service for victims of domestic abuse - one to one work and group work programmes that aid recovery going forward	BDC/HBBC	Mar-25	No engaged via outreach and group work. Case studies and feedback post group work.

<b>Communications and Campaigns</b>	Support campaigns around behaviour change in respect of violence making local use of VRN campaign assets - for example, the 'We don't carry campaign' and 'Make a Stand Campaign'	CSP Tactical Groups	Mar-25	Evidence of support. Statistics on reach.
	Promotion of You're Right, That's wrong' campaign	CSP Tactical Groups	Mar-25	Evidence of delivery. Statistics on reach.
	Deliver campaigns that promote reporting of violence and promote support available for victims.	CSP Tactical Groups	Mar-25	Evidence of delivery. Statistics on reach.



Theme	Action	Owner	End Date	Short, Medium and Long-term Impact Measures
Community Involvement	Deliver fraud and scams initiatives and awareness to communities, businesses and the workplace. (ie Friends against scams, Safer internet day, loan sharks, romance scams). Focus on those most at risk.	BDC/HBBC/LFRS/Trading Standards/ Police	Mar-25	Community more aware of signs of scams, how to reduce chances of becoming a victim and how to report No. of awareness initiatives completed
	Deliver Hate crime awareness initiatives to communities and within the workplace (i.e., Hate Awareness Week)	LCC/BDC/HBBC	Mar 25	Communities more aware of Hate crime, how to access support and how to report. No. of awareness initiatives completed, reach of campaigns
	Deliver Domestic Abuse awareness initiatives within communities, businesses and the workplace (ie White Ribbon)	LCC/BDC/HBBC/DA service providers	Mar 25	Communities more aware of Domestic Abuse, how to access support and how to report. No. of initiatives completed, reach of campaigns
	Ensure community safety information is available at Cost of Living Roadshows, warm spaces, community hubs, social prescriber, JOY App and via other partner events	BDC/HBBC/ Police/LFRS/ LCC	Mar-25	Communities have access to crime and ASB prevention advice and information and how to report. No of events services promoted at
Establishing the Conditions (contextual prevention)	Actively engage in work to continue to meet requirements of the DA Act	County/BDC/ HBBC	Mar-25	Statutory duties are met. Improved services for victims and perpetrators
	Actively engage in work to meet Prevent Duty requirements (ie, deliver prevent action plan, staff and elected member awareness)	County/BDC/ HBBC	Mar 25	Statutory duties are met
	Work with Trading standards via the MAAF (Multi agency action against Fraud) partnership	BDC/HBBC/ Police/ LCC	Mar 25	Member of MAAF Sign off Information Sharing agreement. Evidence of partnership work via the partnership framework
Preventing the Onset	Provide therapeutic services for children who have been affected by domestic abuse, one to one and group work.	BDC/HBBC	Mar-25	Outcome star data. No. accessing one to one and group work

(primary prevention)	Mental Health & suicide prevention information/support etc	Neighbourhood Mental Health Leads / LCC/ ICB	Mar-25	JOY- ongoing promotion  More awareness to be raised within schools including TELLmi (MH digital online support) for 11yr+.
	To create Mental Health Friendly places and communities across LLR that can support the health & well-being of residents by reducing the stigma around discussing mental health and wellbeing, as part of our suicide prevention approach	BDC/HBBC/LCC	Mar 25	Raising awareness of MHFP  No of organisations/businesses/community touch points trained
	To continue to engage with a range of services offered through the Integrated Substance Misuse Treatment and Recovery Service delivered through Turning Point.	HBBC/BDC/ Turning Point	Mar 25	No of service users accessing treatment via Turning Point received on an annual basis in May  Raising awareness of Turning Point services
	To strengthen links with the Teen Health Service including promotion of the website and the wide-ranging offer from the Health and Wellbeing Officers	LCC/ All Partners	Mar 25	Raising awareness of the Teen Health Service No of young people accessing Teen Health Services
	Deliver targeted interventions to reduce traffic road collisions and raise awareness of Road Safety	LFRS/Police/ HBBC/BDC/LCC	March 25	No initiatives delivered – community events, school's inputs, social media campaigns etc Increased awareness of Fatal Four Number speed camera operations. Considerate/ Safer Parking campaigns delivered. Seasonal safety messages delivered – winter driving etc
	Provide Home safety checks for vulnerable people.	LFRS	Mar-25	Vulnerable people are / feel safer in their own homes. No. home safety checks

				Evidence of holistic links to other services via checks.
<b>Intervening Early to Halt Progression (secondary prevention)</b>	Continue to refresh Keep Safe Place schemes to meet the needs of residents in the day and at nighttime.	LCC/BDC/HBBC/	Mar 25	Vulnerable people feel safer out in the community. Enables people who feel at risk to remain safe whilst out. Number of Keep Safe Places registered Expansions/improvements to schemes
	Provide a local domestic abuse outreach service for adult female victims of domestic abuse, Ensure appropriate signposting for male victims to FREEVA. (HBBC)	HBBC/BDC	Mar-25	Improved safety for victims Improved Outcomes for victims No. of referrals to outreach No. of group programmes delivered Qualitative outcome statements from service users
<b>Reducing Impact and Recurrence (tertiary prevention)</b>	Deliver Recovery Groups for victims of DA	HBBC/BDC	Mar-25	Improved safety for victims. Reduce offences of domestic abuse.
	Look to ensure a local offer is in place for target hardening to enable survivors of domestic abuse to remain safely in their own homes (LLR wide provision has changed and no longer commissioned by OPCC)	HBBC/BDC	Mar 25	Local offer is in place
	Share information on initiatives and outcomes ("You said, we did") to communities through use of social media, newsletters, internal and external communications and local press	CSP Tactical Group	Mar -25	Increased community awareness of work of the CSP and support available

Theme	Action	Owner	End Date	Short, Medium and Long-term Impact Measures
<b>Establishing the Conditions (contextual prevention)</b>	Adopt VRN Community Partnership Framework for CSP work	CSP Tactical Group	Nov 24	Evidence of community voice built into local plans.
	Ensure young people's views are embedded within commissioning decisions	CSP Tactical Group	Dec-24	Evidence of young people voice built into local plans. Reduction in young people involved in ASB/Crime and disorder
<b>Preventing the Onset (primary prevention)</b>	Deliver a programme of ASB and crime prevention and awareness work for young people at both secondary and primary level	HBBC/ BDC/ Police	Mar-25	YP are aware of what it is and the consequences. No of school sessions delivered. Awareness evaluation scores
	Dedicated campaigns and partnership planning to tackle seasonal ASB, particularly over the summer period	HBBC/ BDC/ Police	March 25	Dedicated joint campaigns and plans locally.
	Educational work around cycling on pavements, no cycling zones and electric scooters on parks and streets	HBBC/ BDC/ Police	March 25	Schools and school newsletters, targeted work during school holidays Leaflets to warn people LFRS - no of educational campaigns and comms around dangers of lithium batteries LFRS - No of workshops delivered by community safety educators Raise awareness where lithium batteries can be recycled Communities more aware at CSP events Promote within the Graphic publication Work with retailers Include within ASB school workshops Tenant providers raise awareness within new tenant packs
	Deliver targeted interventions to reduce shoplifting	HBBC/ BDC/ Police/ BID/ Businesses	March 25	Shoplifting detection rates Case studies positive partnership work Reduction in shoplifting DISC system/ CCTV/ retail radio usage
	Commission specialist youth outreach and diversionary provision including mentoring programme based on local identified need	CSP Tactical Group	Mar-25	Reduction of first-time entrants into criminal justice system No of young people engaged with

				No of programmes delivered
	Work with Leicester City in the Community to support deliver of Kicks Programme	Police/ HBBC/BDC	Mar-25	ASB reports are reduced Positive outcomes for young people No of ASB incidents reported No young people attending Theory of Change Model
	Work with partners on the launch, content and promotion of the new LLR Hate Crime Hub	BDC/ HBBC/Police	Mar-25	
	Identify and attend key community events. Joint attendance by CSP and deliver awareness on key themes identified	CSP Tactical Groups	Mar 25	Communities more aware of crime and fire prevention, partner services, victim services
Intervening Early to Halt Progression (secondary prevention)	Deliver a programme of local and national campaigns relevant to local needs	BDC/ HBBC/ Police	Mar-25	Increased awareness of crime prevention Increased reporting Increased awareness of support services Increased awareness of community safety themes Increased awareness of signs to spot Reach of campaign
	Effective problem solving via JAG/Youth JAG/PPF to enable partnerships to tackle issues relating to offending and reoffending. Encouraging JAG/PPF to be supportive environments and consider “causes of causes” in problem solving approaches	BDC/ HBBC/ Police	Mar-25	Impact: people dealt with at JAG/PPF achieve positive outcome and reduce offending Measure: No of referrals/ cases managed
	Work to reduce rural crime via strong partnership work, dedicated ops and awareness work with rural communities.	CSP Tactical Group		No rural crime events/ engagements Attendance at LLR wide Rural Crime meeting Parish Forum attendances Initiatives targeted at rural crime Reduction in rural crime Dedicated Rural Crime team and Ops CSP funded initiatives/target hardening
	Expand and embed “Ask for Angela” and other campaigns that target improving safety and reducing offending within the NTE	BDC/ HBBC/ Pubwatch	Mar-25	Increased safety in the NTE Reduced offences within the NTE No of NTE safety schemes

	Deliver targeted interventions via PCC PLF funded schemes (ie vehicle crime, burglary cocooning packs scheme)	HBBC/ BDC/ Police	Mar-25	Targeted ASB and crimes reduce No of interventions delivered No of people engaged with
<b>Reducing Impact and Recurrence (tertiary prevention)</b>	Identify emerging threats throughout the year via Tactical groups and JAGS and put in appropriate actions to tackle	HBBC/ BDC/ Police	Mar 25	There is an appropriate response to issues in the area